

COVID-19 Notice

No in-person attendance allowed, pursuant to Governor Inslee's Proclamation 20-28.

All meeting attendees, including Board of Commissioners, staff and members of the public must participate virtually. No physical meeting location will be provided.

To attend the meeting, dial Phone Conference Line: (509) 598-2842
When prompted, enter Conference ID number: 74975408

Jefferson County Public Hospital District No.2
Board of Commissioners, Special Session Minutes
Tuesday, May 12, 2020

Call to Order:

The meeting was called to order at 3:00pm by Board Chair Buhler Rienstra. Present by phone were Commissioners Dressler, McComas, Ready, and Kolff. Also, in attendance by phone were Mike Glenn, CEO, Hilary Whittington, Chief Administrative Officer/Chief Financial Officer, Tina Toner, Chief Nursing Officer, Dr. Joseph Mattern, Chief Medical officer, and Alyssa Rodrigues, Administrative Assistant were also in attendance. This meeting was officially audio recorded by Jefferson Healthcare.

Special Session:

The purpose of this special session was for Jefferson Healthcare to determine the health system readiness, as defined by the State of Washington Department of Health and consider authorizing a letter to the Jefferson County Board of Health certifying it has adequate bed capacity to serve our community and adequate PPE supplies to keep workers safe. Action may be taken.

Required Approvals: Action Requested

- Jefferson Healthcare Readiness for COVID-19 Surge
 - Dr. Joseph Mattern, MD, CMO, Dr. Steve Butterfield, MD, CMO Medical Group, Dr. Tracie Harris, MD, Chief of Medicine, Tina Toner, CNO, and Mike Glenn, CEO.
- Letter of certification

Mike Glenn, CEO, Dr. Steve Butterfield, CMO of Medical Group, Tina Toner, CNO, Dr. Tracie Harris, Chief of Medicine, and Dr. Joseph Mattern, CMO presented Jefferson Healthcare's Readiness for COVID-19 Surge and letter of certification.

Discussion ensued.

Commissioner Kolff made a proposal to authorize staff to send a letter to the Board of Health stating that Jefferson Healthcare has adequate bed capacity to serve communities and adequate Person Protective Equipment to keep our workers safe to meet the projected future needs of our community during the pandemic. Commissioner Dressler seconded.

Discussion ensued.

Action: Motion passed 4 to 1. Commissioner Buhler Rienstra, Dressler, Kolff and McComas in favor. Commissioner Ready opposed.

Conclude:

Commissioner Kolff made a motion to conclude the meeting. Commissioner Dressler seconded.

Action: Motion passed unanimously.

Meeting concluded at 4:49pm.

Approved by the Commission:

Chair of Commission: Jill Buhler Rienstra _____

Secretary of Commission: Marie Dressler _____

Jefferson Healthcare

Administrative Report

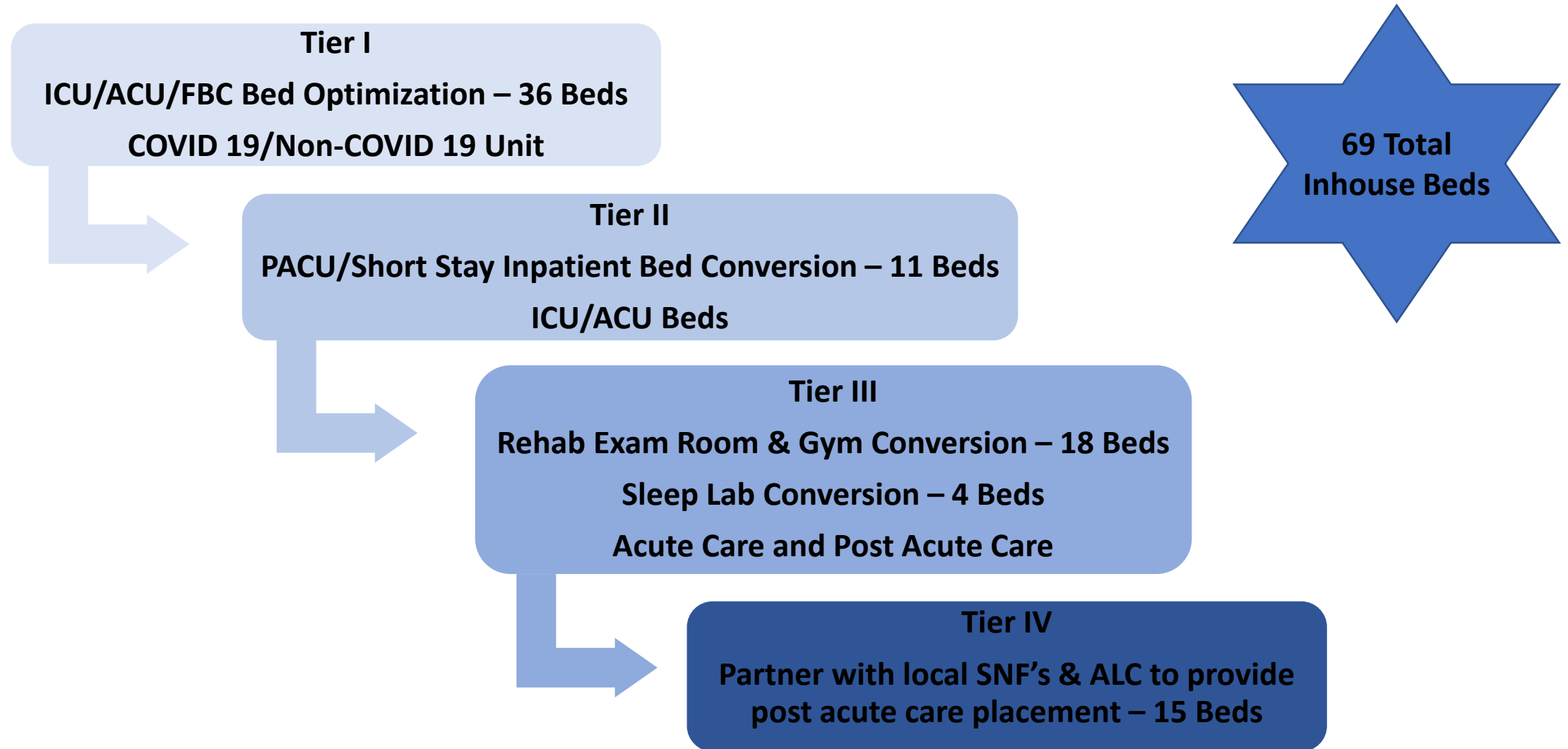
May 12, 2020

Mike Glenn, CEO



COVID-19 Bed Expansion Plan April –August 2020

Progression

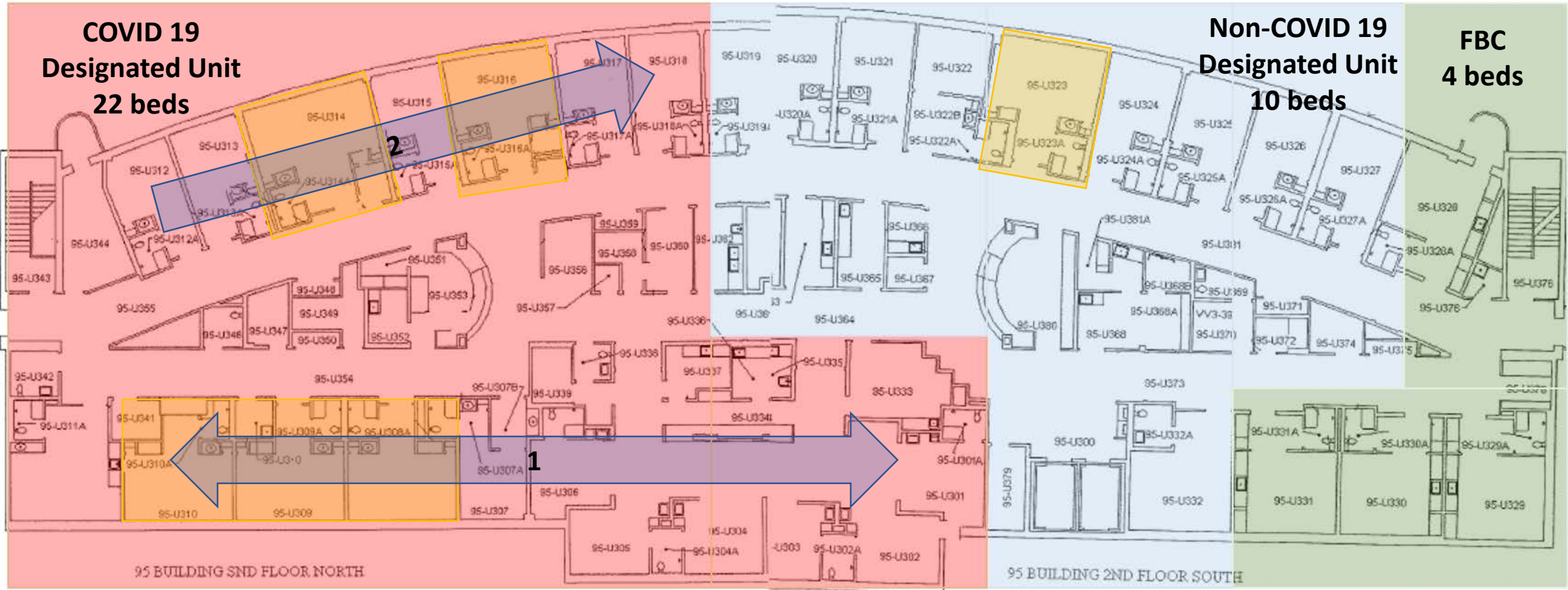


Tier I
ICU/ACU/FBC Bed Optimization
COVID 19/Non-COVID 19 Unit

**COVID 19
Designated Unit
22 beds**

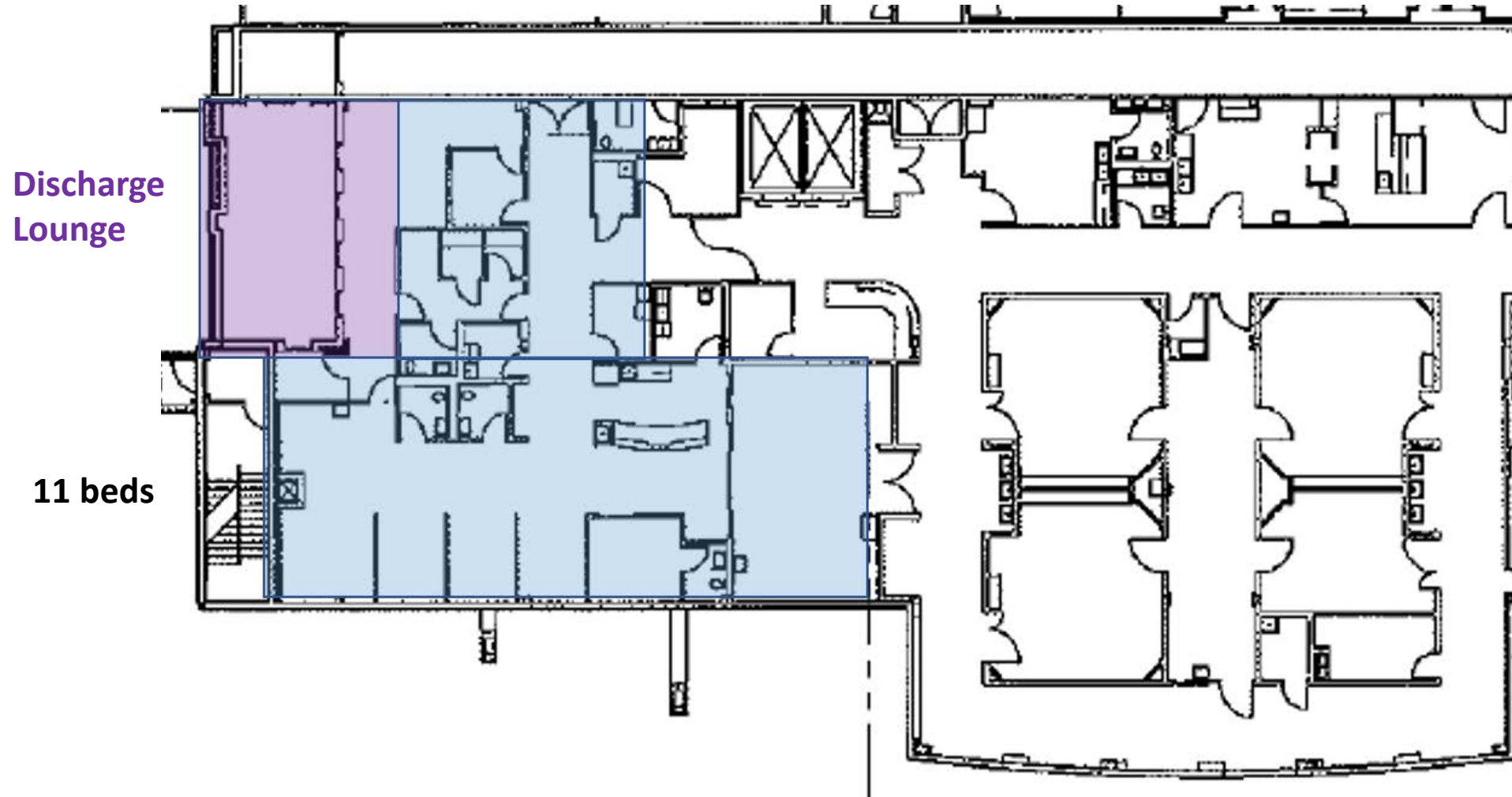
**Non-COVID 19
Designated Unit
10 beds**

**FBC
4 beds**

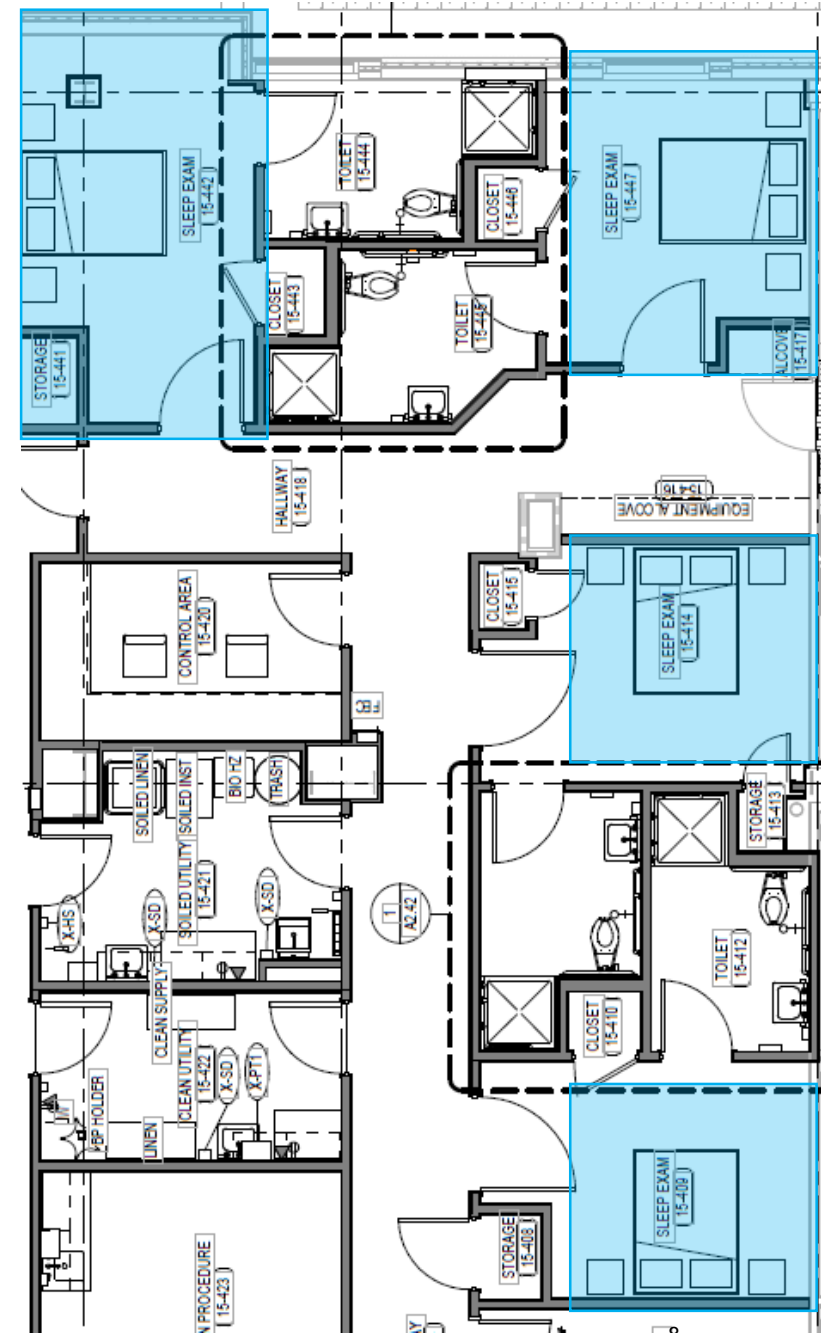
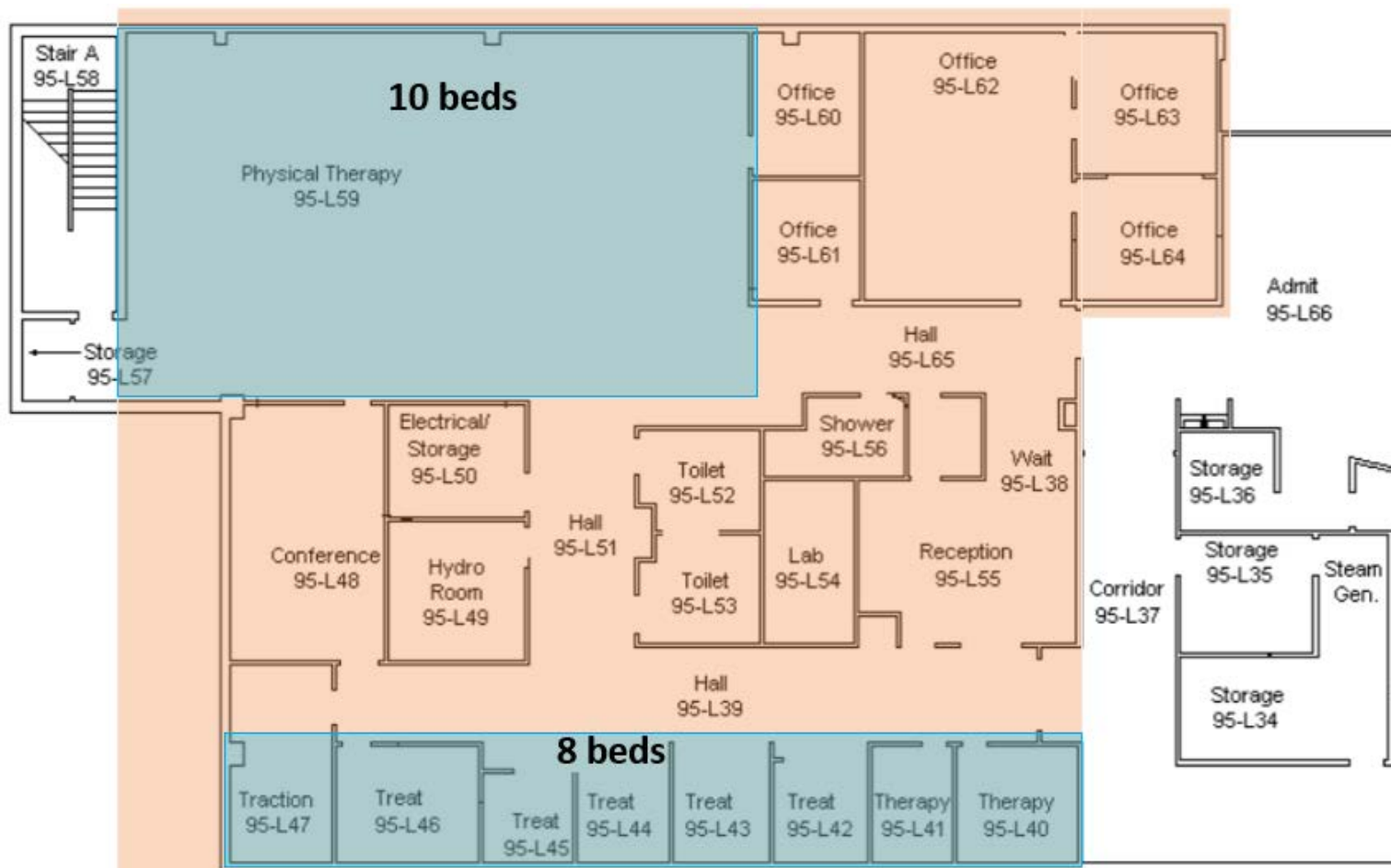


*yellow = semi-private rooms

Tier II
PACU/Short Stay Inpatient Bed Conversion
ICU/ACU Beds



Tier III
Rehab Exam Room/Gym & Sleep Lab Conversion
Acute Care and Post Acute Care



4 hospice beds

Update 05/12/2020

Tests	
Total Tested	1067
Negatives	1014
Positives	29
Percentage Positive	2.7%
Employee Tests	1 positive (not an occupational transmission) 106 negatives

PPE Inventory

Location	Procedure Masks	N 95	Gowns	Eye Protection	PAPR Hood
JH Department Inventory	8813	820	1001	1082	35
JH General Stores	29,710	10,059	8,900	219	0
JH Donations	4,067	0	0	0	0
JH COVID SURGE STOCKPILE	29,800	4,660	9,000	500	0
Total Total	72,390	15,539	18,901	1,801	35

PPE USE PER DAY (based on current utilization)

Use Per Day = Average daily use over 30 days

PPE Type	Total Inventory	Use Per Day (Burn Rate)
Procedure Masks	72,390	558
Gowns (Disposable)	18,901	203
N95 Masks	15,539	116
Eye Protection	1,801	1
PAPR Hood	35	N/A



May 4, 2020

Kittitas County Board of Health:

Kittitas County Public Hospital District #1 operates Kittitas Valley Hospital (KVH).

KVH is currently authorized by the Washington State Department of Health to operate at an inpatient surge capacity of 61 beds. This licensed capacity exceeds current average daily census by approximately 46 patients. KVH is prepared to meet surge demands in our Emergency Department and in our ambulatory clinics as well as our Critical Care and Acute Care settings. KVH is prepared to staff, equip and supply surge volumes.

KVH has cross trained physicians, nurses and ancillary personnel to support additional inpatient volumes in the event of a prolonged surge. We have modified the physical plant to limit exposure to infection for both staff and patients. These modifications include airflow, physical barriers, alternative entrances, exits, patient routes and support space. KVH received additional hospital beds and ventilators from Kittitas County's Emergency Operations Center. The added equipment increases long term ventilator capacity from 7 to 10.

KVH is adhering to the Washington State Department of Health's PPE conservation guidelines. KVH has an on hand inventory of critical personal protective equipment that exceeds anticipated demand at surge capacity for 30+ days. KVH remains on allocation from routine vendors but we have developed new sources for masks, gowns, gloves and cleaning supplies to augment our traditional supply chain. These new suppliers include community donations, KC Emergency Operations Center and the Washington State Hospital Association.

In addition to PPE, KVH has increased on hand inventory of critical medical supplies, medical consumables, laboratory supplies (including test kits) and pharmaceuticals.

KVH has adequate bed capacity to serve our communities and adequate personal protective equipment to keep our workers safe.

Sincerely,

Julie Petersen, CEO

Dr. Kevin Martin, CMO

www.kvhhealthcare.org
509.962.9841 • Fax: 509.962.7351
603 S. Chestnut Street • Ellensburg, WA 98926