

COVID-19 Notice

**No in-person attendance allowed, pursuant to Governor
Inslee's Proclamation 20-28.**

**All meeting attendees, including Board of Commissioners, staff and
members of the public must participate virtually. No physical meeting
location will be provided.**

To attend the meeting, dial Phone Conference Line: (509) 598-2842
When prompted, enter Conference ID number: 74975408

Special Session Agenda
Tuesday, May 12, 2020

Call to Order: 3:00

Special Session:

The purpose of this special session is for Jefferson Healthcare to determine the health system readiness, as defined by the State of Washington Department of Health and consider authorizing a letter to the Jefferson County Board of Health certifying it has adequate bed capacity to serve our community and adequate PPE supplies to keep workers safe.

Administrative Report:

- Jefferson Healthcare Readiness for COVID-19 Surge
 - Dr. Joseph Mattern, MD, CMO, Dr. Steve Butterfield, MD, CMO Medical Group, Dr. Tracie Harris, MD, Chief of Medicine, Tina Toner, CNO, and Mike Glenn, CEO
- Letter of certification

Conclude: 4:30

This Special Session will be officially recorded.
Times shown in agenda are estimates only.

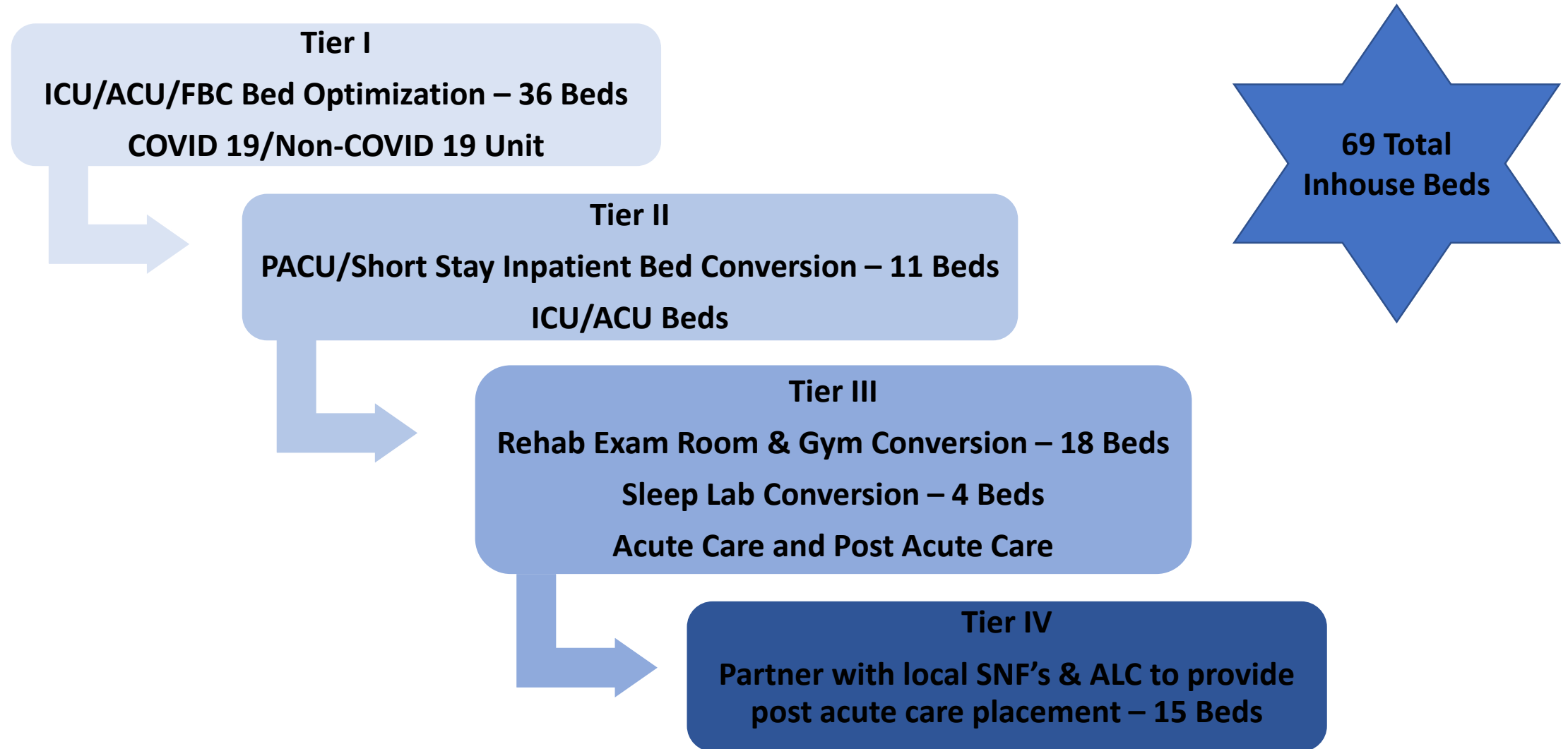
No Live Public Comment

In lieu of live comments, members of the public may comment on any agenda item or any other matter related to the District via a letter addressed to the Commissioners at 834 Sheridan Street, Port Townsend, Washington 98368, or via email to commissioners@jeffersonhealthcare.org.



COVID-19
Bed Expansion Plan
April –August 2020

Progression

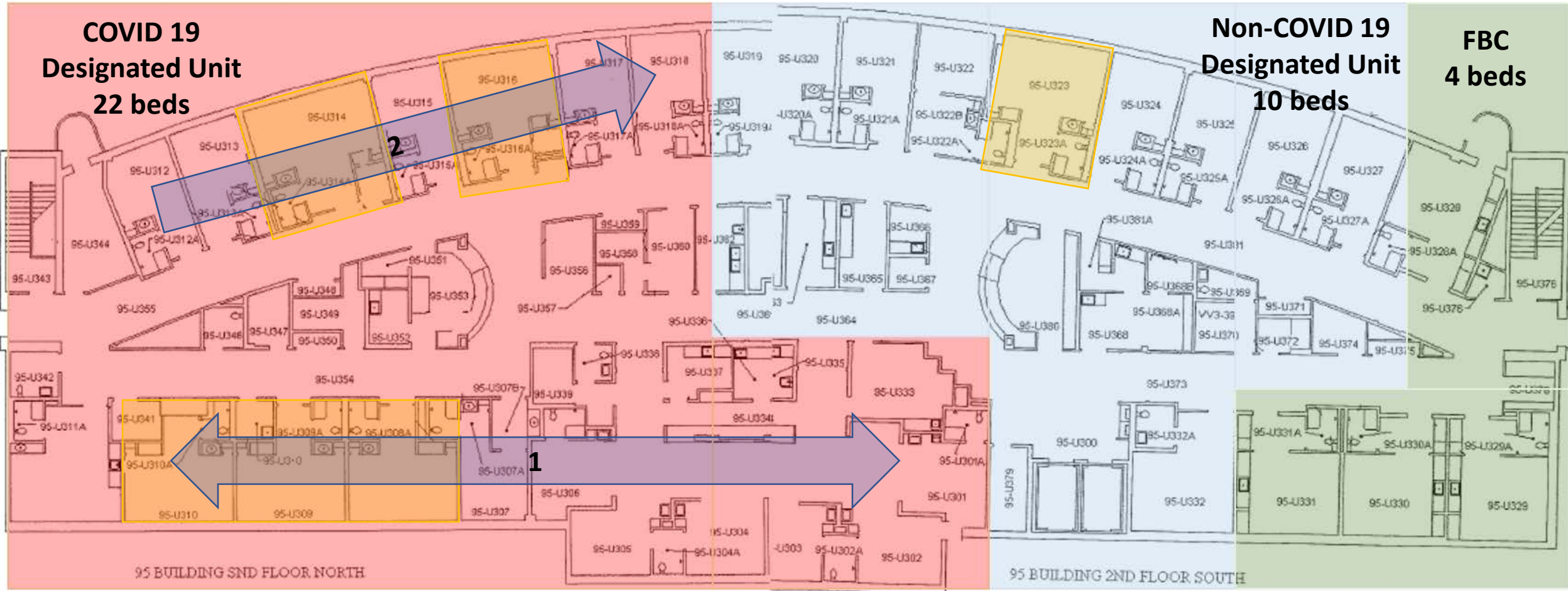


Tier I
ICU/ACU/FBC Bed Optimization
COVID 19/Non-COVID 19 Unit

**COVID 19
Designated Unit
22 beds**

**Non-COVID 19
Designated Unit
10 beds**

**FBC
4 beds**

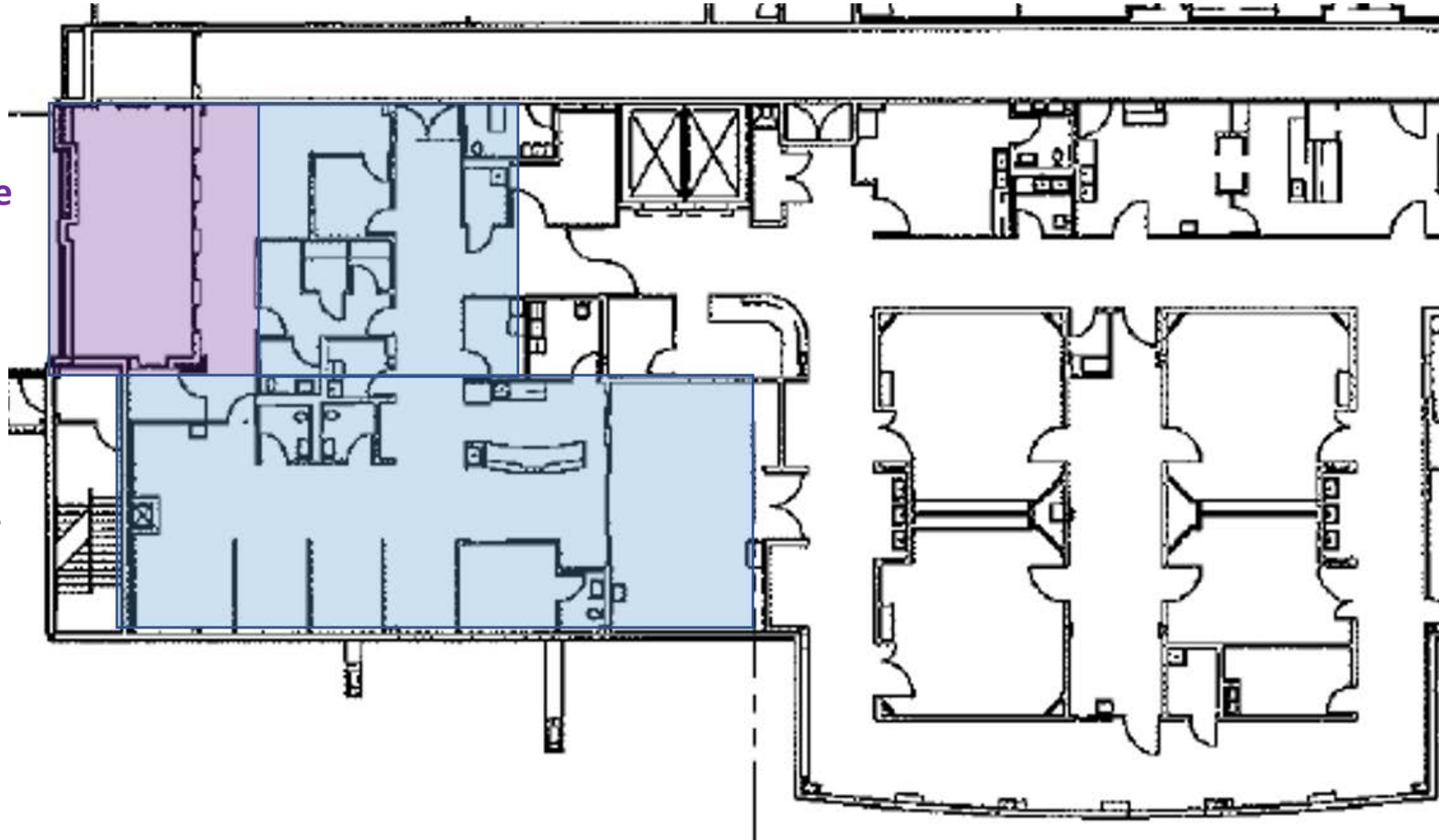


*yellow = semi-private rooms

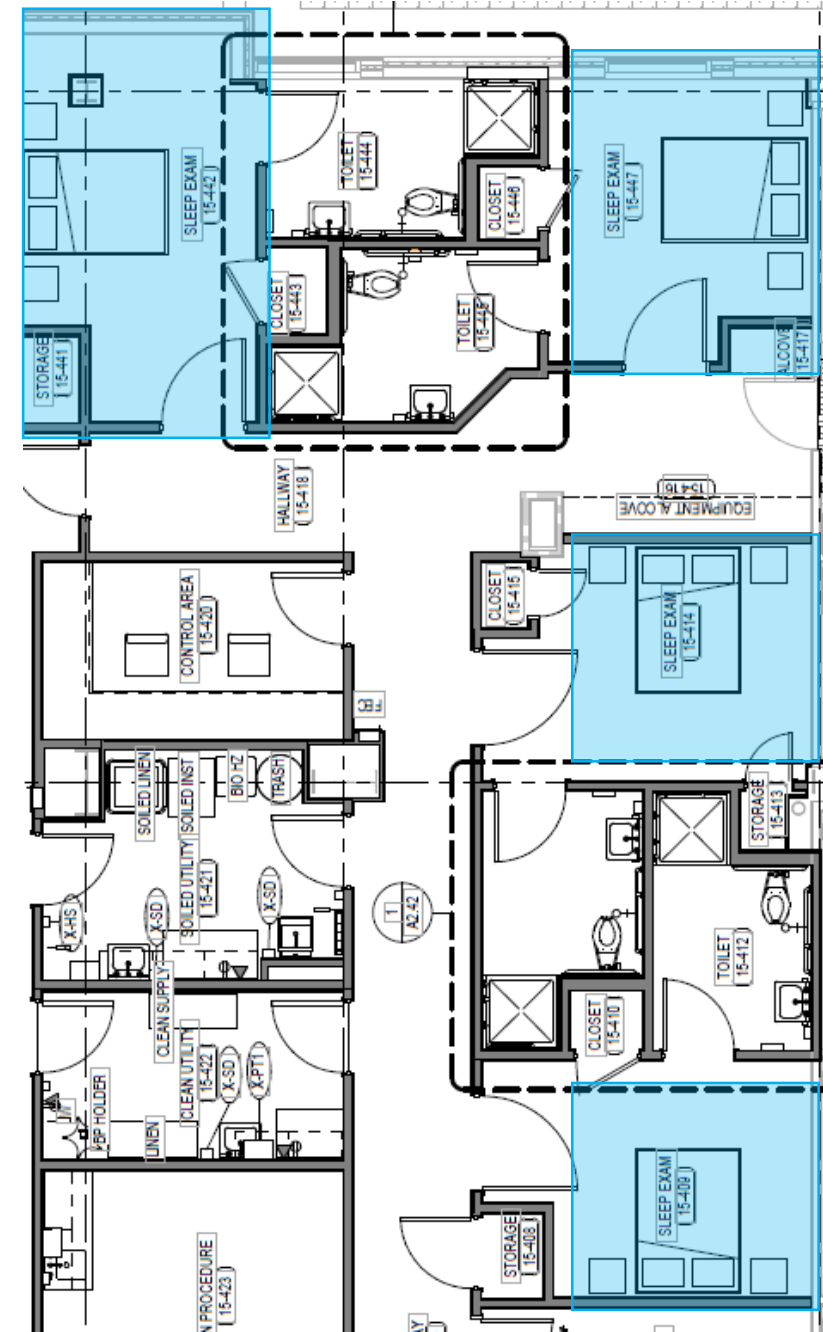
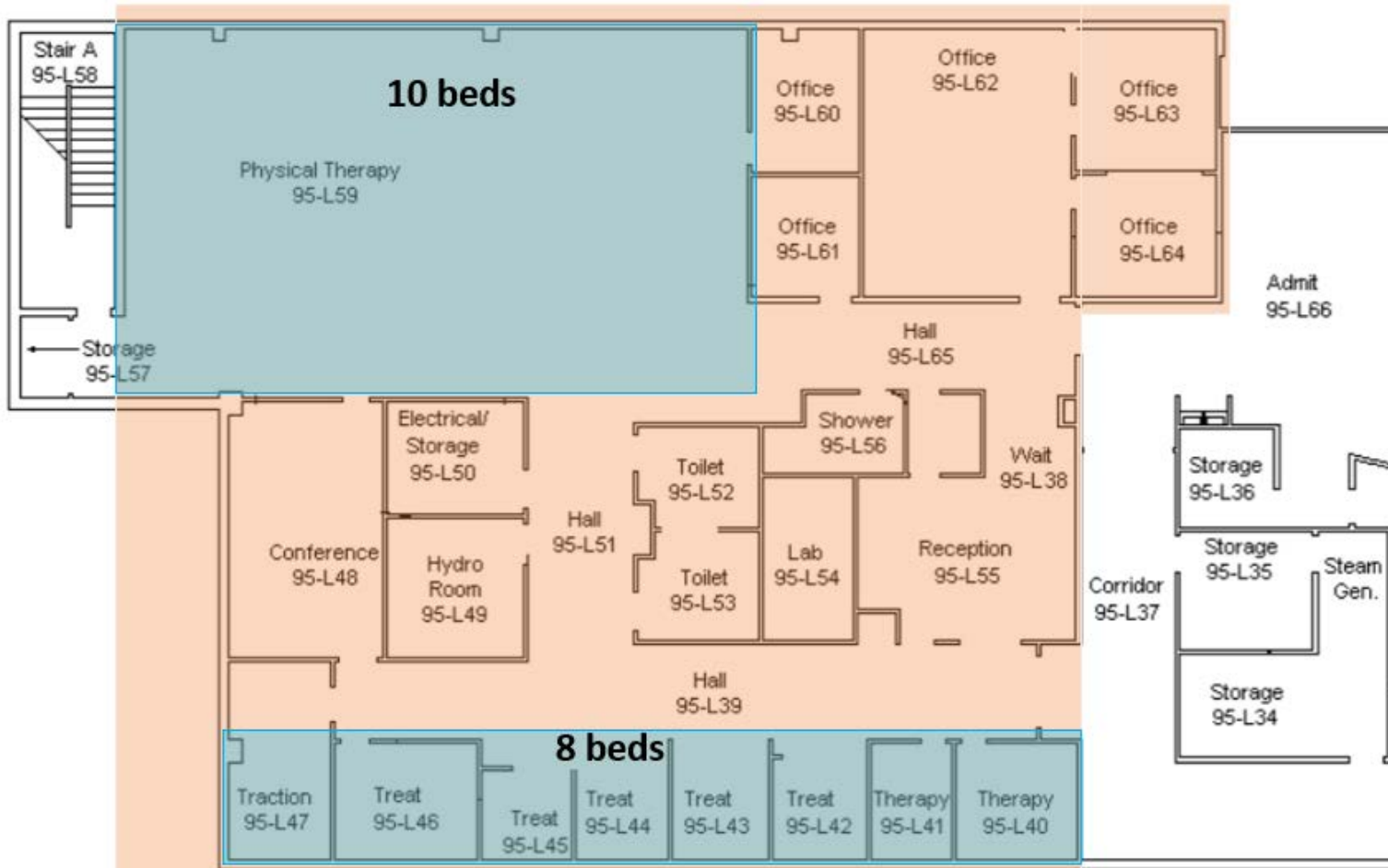
Tier II
PACU/Short Stay Inpatient Bed Conversion
ICU/ACU Beds

Discharge Lounge

11 beds



Tier III
 Rehab Exam Room/Gym & Sleep Lab Conversion
 Acute Care and Post Acute Care



4 hospice beds

Update 05/07/2020

Tests	
Total Tested	947
Negatives	919
Positives	28
Percentage Positive	2.9%
Employee Tests	1 positive (not an occupational transmission) 103 negatives

PPE Inventory

Location	Procedure Masks	N 95	Gowns	Eye Protection	PAPR Hood
JH Department Inventory	7042	988	881	957	35
JH General Stores	20875	8033	5730	320	0
JH Donations	4067	65	0	0	0
JH COVID SURGE STOCKPILE	30,000	4,380	9,000	0	0
Total Total	61,984	13,466	15,611	1,277	35

PPE USE PER DAY (based on current utilization)

Use Per Day = Average daily use over 30 days

PPE Type	Total Inventory	Use Per Day (Burn Rate)
Procedure Masks	61,923	490
Gowns (Disposable)	15641	239
N95 Masks	12786	113
Eye Protection	1262	2
PAPR Hood	35	N/A



May 4, 2020

Kittitas County Board of Health:

Kittitas County Public Hospital District #1 operates Kittitas Valley Hospital (KVH).

KVH is currently authorized by the Washington State Department of Health to operate at an inpatient surge capacity of 61 beds. This licensed capacity exceeds current average daily census by approximately 46 patients. KVH is prepared to meet surge demands in our Emergency Department and in our ambulatory clinics as well as our Critical Care and Acute Care settings. KVH is prepared to staff, equip and supply surge volumes.

KVH has cross trained physicians, nurses and ancillary personnel to support additional inpatient volumes in the event of a prolonged surge. We have modified the physical plant to limit exposure to infection for both staff and patients. These modifications include airflow, physical barriers, alternative entrances, exits, patient routes and support space. KVH received additional hospital beds and ventilators from Kittitas County's Emergency Operations Center. The added equipment increases long term ventilator capacity from 7 to 10.

KVH is adhering to the Washington State Department of Health's PPE conservation guidelines. KVH has an on hand inventory of critical personal protective equipment that exceeds anticipated demand at surge capacity for 30+ days. KVH remains on allocation from routine vendors but we have developed new sources for masks, gowns, gloves and cleaning supplies to augment our traditional supply chain. These new suppliers include community donations, KC Emergency Operations Center and the Washington State Hospital Association.

In addition to PPE, KVH has increased on hand inventory of critical medical supplies, medical consumables, laboratory supplies (including test kits) and pharmaceuticals.

KVH has adequate bed capacity to serve our communities and adequate personal protective equipment to keep our workers safe.

Sincerely,

A handwritten signature in black ink, appearing to read 'Julie Petersen', written over a white background.

Julie Petersen, CEO

A handwritten signature in black ink, appearing to read 'Kevin Martin', written over a white background.

Dr. Kevin Martin, CMO