

**Jefferson County Public Hospital District no. 2
Board of Commissioners,
Special Session Minutes
Joint Board Meeting with Jefferson County Board of Health
Wednesday, March 20, 2018
Cotton Building, 607 Water St, Port Townsend, WA 98368**

Call to Order:

The meeting was called to order at 3:02pm by Jefferson County Public Hospital District No. 2 chair, Commissioner Buhler. Present were Jefferson County Public Hospital District No. 2 Commissioners Buhler, Dressler, Ready, Kolff and McComas. Present from the Jefferson County Board of Health were board chair Austin, Sullivan, Kler, Dean, Westerman, and Speser. Also present was Mike Glenn, CEO, Jefferson County Public Hospital District No. 2, Philip Morley, Jefferson County Administrator, Vicki Kirkpatrick, Director of Jefferson County Public Health and John Nowak, Executive Director of Community Health Improvement Plan and Alyssa Rodrigues, Administrative Assistant Jefferson County Public Hospital District No. 2.

Special Session:

The purpose of this special session is a joint board meeting between Jefferson County Public Hospital District No.2 Commissioners and Jefferson County Board of Health Commissioners to review the Community Health Improvement Plan progress.

Introductions were made.

Community Health Improvement Plan Program Staffing:

Vicki Kirkpatrick, Director of Jefferson County Public Health gave an introduction and discussed staffing.

Discussion ensued.

Review of current state and action plan:

John Nowak, Executive Director of Community Health Improvement Plan reviewed the current status of plan including: grants and funding, community outreach and communication, metrics and evaluation, and partnership development and next steps.

Discussion ensued.

Public Comment:

Public comment was made.

Commissioners discussed frequency of meeting and agreed on quarterly meetings.

Conclude:

Commissioner Dressler made a motion to conclude the meeting. Commissioner Kolff seconded the motion.

Meeting concluded at 3:58pm.

Approved by the Commission:

Chair of Commission: Jill Buhler _____

Secretary of Commission: Marie Dressler _____



Jefferson County, WA
CHIP
Community Health Improvement Programs



Jefferson
County
Public Health




Jefferson
Healthcare




City of Port
Townsend


WELCOME




Jefferson County, WA
CHIP
Community Health Improvement Programs



Jefferson
County
Public Health




Jefferson
Healthcare

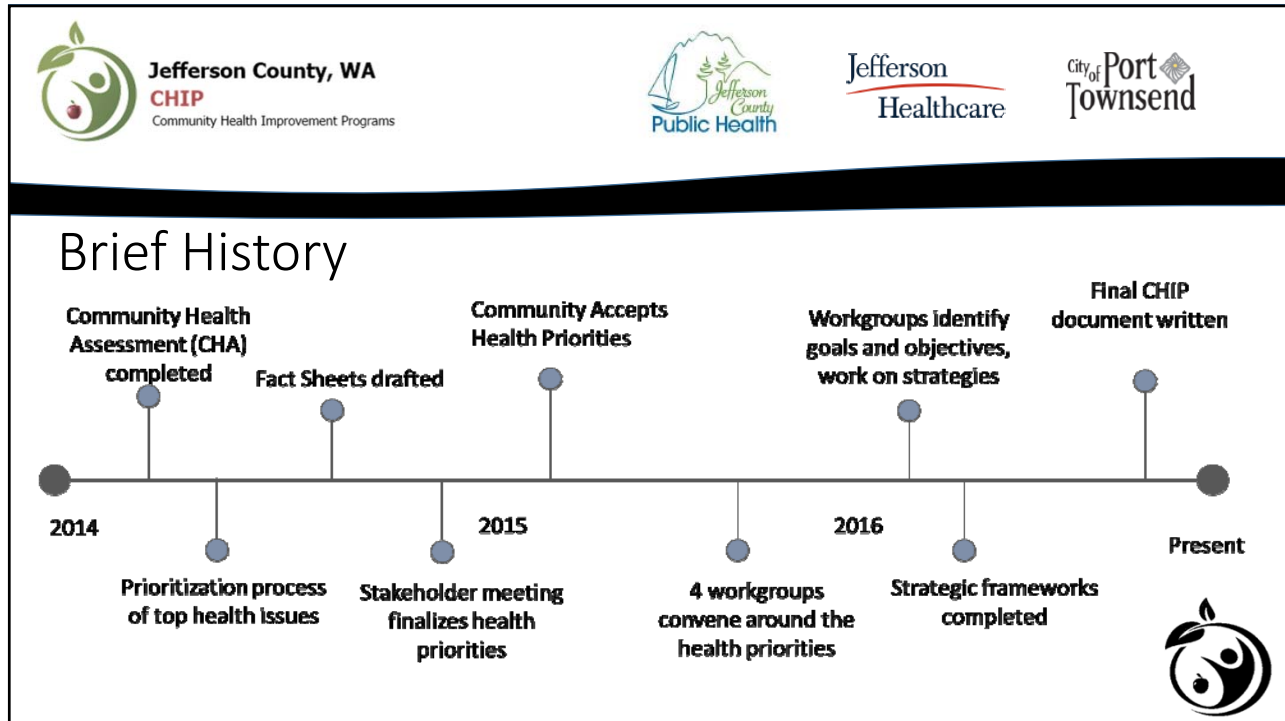


City of Port
Townsend

Agenda

- Call to Order
- Community Health Improvement Plan Program Staffing
- Review of Current State and Action Plan
- Public Comment
- Conclude





Category	Goals
Chronic Disease Prevention	Increase the percent of the population who get the appropriate activity levels throughout Jefferson County to >75% by 2020.
	Increase the percent of the Jefferson County population eating a healthy diet to >50% by 2020.
	Increase the percentage of youth and pregnant women meeting healthy weight standards.
	Enhance community health improvement strategies in local policy.
Mental Health and Chemical Dependency	Decrease the abuse of alcohol, tobacco, and other drugs for all by 10% by 2020.
	Reduce suicides and avoidable drug related fatalities by 75% by 2020.
	Decrease mental health crisis events by 25% by 2020 through addressing underlying risk factors.
Immunizations	Meet the National Healthy People 2020 goals for childhood immunization in Jefferson County by 2020, in order to increase protection for children and increase protections for the full community.
	Meet the National Healthy People 2020 goals for adult flu and pneumococcal immunization in Jefferson County by 2020.
	Meet recommendations of CDC for all pregnant women to receive a Tdap immunization in each pregnancy.
Access to Care	100% of people who seek healthcare are able to get it.
	100% of people in Jefferson County report that they are adequately insured.
	100% of people who seek dental care are able to receive it.



Jefferson County, WA
CHIP
Community Health Improvement Programs



Jefferson
Healthcare

City of Port
Townsend

- Review of current status of plan including:
 - Grants and Funding
 - Community Outreach and Communication
 - Metrics and Evaluation
 - Partnership Development



Jefferson County, WA
CHIP
Community Health Improvement Programs



Jefferson
Healthcare

City of Port
Townsend

Grants and Funding

- Grants that have been submitted: 2
- Grants reviewed by CHIP oversight ready for submission: 2
- Grants with planned submission: 5
- We will meet with some non-profits' development staff to consider other funding sources for the plan.





Jefferson County, WA
CHIP
Community Health Improvement Programs



Jefferson
Healthcare

City of Port
Townsend

Community Outreach and Communication

- Some community outreach has begun. About 6 community meetings and events have occurred-including the kickoff meeting and a Rotary visit.
- The Leader published two CHIP articles.
- A Facebook page has been developed.
- Teams from the four health priority workgroups have started meeting to evaluate progress on the plan and to begin prioritizing the activities.
- Teams are working to identify who should be added to each group.
- Leads have been selected for three groups.



Jefferson County, WA
CHIP
Community Health Improvement Programs



Jefferson
Healthcare

City of Port
Townsend

Metrics and Evaluation

- After evaluation by the individual teams, we will report at each joint board meeting the progress on Strategies and Activities. We will list the number of items completed and activities in-progress.
- Any interim outcome measures available also will be presented.
- We will begin planning for the next community health assessment. As much as possible this will be coordinated with the OCH





Jefferson County, WA
CHIP
Community Health Improvement Programs



Jefferson
Healthcare

City of Port
Townsend

Partnership Development

- The CHIP plan maintains a close relationship with the OCH. We will continue to develop and enhance that relationship and look for opportunities to collaborate.
- Several groups have started mapping community resources. This work will continue with a plan to develop an overall map of resources.
- The resource map will be used to continue to develop community partnerships.



Jefferson County, WA
CHIP
Community Health Improvement Programs



Jefferson
Healthcare

City of Port
Townsend

Next Steps

- Continue meeting within the priority workgroups.
 - Complete the identification of leads for each strategy.
 - Actively search for a lead for the Mental Health Chemical Dependency team.
 - Complete identification of accomplishments and progress on activities.
 - Set priorities for work to be completed.
- Review grants and update submissions as necessary.
- Research other grants and funding.





Jefferson County, WA
CHIP
Community Health Improvement Programs



Jefferson
Healthcare

City of Port
Townsend

Next Steps - continued

- Develop map of community resources and then contact them about the CHIP plan.
- Develop talking points about plan progress and next steps. Share this with team members, boards and community.
- Understand OCH plan for Community Health Assessment and plan for the next assessment.



Jefferson County, WA
CHIP
Community Health Improvement Programs



Jefferson
Healthcare

City of Port
Townsend

Questions?

